



Conservation News

Protecting Open Space on Long Island's North Shore

NORTH SHORE LAND ALLIANCE

Volume 8, Issue 15

Board of Trustees

Carter Bales, Chair
Hal Davidson, Vice-Chair
Luis Rinaldini, Vice-Chair
Rosemary Bourne, Treas.
Hollis Russell, Sec'y.

Elizabeth Ainslie
Peter Bartley
John Bralower
Gib Chapman
Augusta Donohue
Nancy Douzinas
George Eberle
Mark Fasciano
Max Geddes
Leland Hair
Hoyle Jones
Nancy Kelley
Warren Kraft
Tom Lieber
Bridget Macaskill
Tom McGrath
Clarence Michalis
Jonathan Moore
Judy Murray
Patsy Randolph
Julie Rinaldini
Larry Schmidlapp
Frank Segarra
Hope Smith
Zach Taylor
Terry Thielen
Paula Weir
Tom Zoller

Trustee Emeritus

Danny Davison

Advisory Board

Myron Blumenfeld
Ann Cannell
Judith Chapman
Katusha Davison
Louise Harrison
Eric Kulleseid
Neal Lewis
Robert Mackay
Sarah Meyland
Barry Osborn
Peter Schiff
John Turner
Richard Weir

Staff

Lisa Ott, President
Associate Directors:
Beth Baldwin
Jane Jackson
Carol Schmidlapp
Mimi DeSena, Bookkeeper
Andrea Millwood, Office Mgr.



ONE WEEK LEFT TO PURCHASE OPTION ON DEFOREST WILLIAMS PROPERTY

Overlooking majestic Cold Spring Harbor, the DeForest Williams property is a treasured place under imminent threat of development.

In an effort to save this environmentally sensitive parcel rich with Long Island history, the Town of Huntington, Suffolk County and the North Shore Land Alliance/Cold Spring Harbor Community are proceeding with a deal to purchase the 31-acre Wawapek Farm, land owned by the DeForest Williams family for over 100 years. The total purchase price is \$8.5 million with Suffolk County to pay 50%, the Town of Huntington to pay 25% and the North Shore Land Alliance/Cold Spring Harbor Community Members to pay 25%. The approximately \$2 million private portion will be raised through grants and a three-year capital campaign.

In order to acquire property, municipalities must go through specific processes. While both Suffolk County and the Town of Huntington are moving forward, the government process is taking longer than anticipated and the estate is running out of time. If we are to protect this treasured spot, we have until the end of July to raise \$625,000 to purchase a one year option.



Dear Land Alliance Friends,

Conserving land “in perpetuity” is a responsibility the North Shore Land Alliance takes very seriously. Landowners donating easements to the Land Alliance and other land trusts usually do so because they hold a deep-rooted respect for and love of their land. When they make the considerable effort to donate an easement they expect that their land will be protected forever.

When the federal government made the important decision in the mid-1980’s to invest in America by offering tax incentives to donors of conservation-worthy lands, they expected those lands would be protected forever too. And, they expected land conservation organizations such as ours to assume the responsibility of ensuring that those easements continue in perpetuity.

As perpetual easements did not become the norm until the late 1980s, stories involving breaches and attempts to change or invalidate easements are just starting to pop up across the country and often involve some amount of litigation. Although most courts find in favor of a land trust and uphold the easement, the litigation costs required to defend it could become quite onerous for a small organization like ours.

We are pleased to announce that the Land Trust Alliance (LTA) has created an insurance company to help land trusts defend their easements and fee-owned lands. This new company, called Terrafirma Risk Retention Group LLC, was created in 2011 and recently received IRS nonprofit status approval.

According to the LTA, “Terrafirma is owned by its members to insure the costs of upholding conservation easements and fee lands held for conservation purposes when they have been violated or are under legal attack, and to provide information to those land trusts on risk management.” Terrafirma will sell policies to land trusts around the country offering up to \$500,000 in legal coverage annually.

I am pleased to report that the North Shore Land Alliance was among the first of 460 land trusts to sign up for Terrafirma. We hope this action, coupled with the actions the Land Alliance takes every day to defend our local environment, demonstrates our ability and our promise to uphold conservation permanently.

Your Friend in Conservation,

Chair

P.S. Perhaps our village governments should explore a similar insurance program for defending environmentally-friendly local ordinances. Some food for thought.....

THE OPPORTUNITY

The property owners prefer the property be bought for conservation purposes. With that said, this delay has been expensive and they can't wait much longer before they will be forced to sell. To escalate the urgency of this matter even more, the Town of Huntington Planning Board approved, on March 28, 2012, a 15-lot subdivision plan for the property, making this property even more attractive to the development market.

THE PROPOSED SOLUTION - TO BUY TIME

The Land Alliance has met with the owners and they have agreed to sell the Land Alliance a one-year option to buy the property. Purchasing this option will induce the owners to withhold the property from the market and provide time for the Land Alliance to coordinate the public/private partnership to acquire it for preservation purposes.

THE TERMS AND TIMING

While pledges to the approximately \$2 million capital campaign may be spread over three years, we only have until July 23rd to raise the funds necessary to purchase the \$625,000 option (which will be credited toward the cost of acquisition).

The Land Alliance made an initial commitment of a \$100,000 challenge grant to kick off the Option Fundraising Campaign (funded by a \$35,000 grant from the 1772 Foundation, \$7,100 in contributions from the DeForest Williams online petition and the remainder to come from the Land Alliance's Conservation Action Fund).

The community met our challenge head on and has pledged \$530,000 to date. We desperately need your help to raise an additional \$95,000 in the next few days so we can take the property off the market and allow the County and Town time to finish their necessary steps.

We really need your help! Please contribute to this important effort and ask your neighbors to join you. Your contribution is tax-deductible and the option payment will be applied toward the ultimate purchase price.

In the unlikely event we are not able to raise the option price, your contribution will be returned. If you have any questions, please contact the North Shore Land Alliance office at 516-626-0908.

WHY IT'S IMPORTANT

If we are not successful, that majestic tree-filled view of Cold Spring Harbor will be altered forever. Other harmful impacts include:

- 1) Development increases the nitrogen load in local waters due to septic and fertilizers. The increase in nitrogen causes hypoxia, depletion of oxygen in bodies of water and resulting in the loss of fish.
- 2) Development alters the natural slopes which could result in significant runoff and flooding of the Cold Spring Harbor below. 61% of the property is heavily wooded with slopes over 10% in elevation.
- 3) Clear-cutting of this hardwood forest would increase erosion further, erode air quality and impair habitat for a variety of birds, other wildlife, old growth trees, rare plants and wildflowers.



DeForest Williams aerial photo.

WHAT CAN YOU DO?

1) Join the steering committee to guide the Campaign to Protect the DeForest Williams Property. Please contact the Land Alliance, ASAP, if you are interested in helping at 516-626-0908 or lisa@northshorelandalliance.org.

2) Make a financial pledge to the Campaign to Protect the DeForest Williams Property. Contributions of any amount are appreciated. Please call the Land Alliance at 516-626-0908 for details. Contributions are tax-deductible.

3) Ask County Executive Steve Bellone and the Suffolk County Legislature to make the DeForest Williams property a priority acquisition. The County Executive can be reached at 631-853-4000 or county.executive@suffolkcountyny.gov. The presiding officer of the Legislature is William J. Lindsay. He can be reached at 631-853-4088 or presidingofficer.legislature@suffolkcountyny.gov.

4) Thank Huntington Supervisor Frank Petrone and the Town Board for their commitment to the protection of this environmentally significant property. Supervisor Petrone can be reached at 631-351-3030 or fpetrone@huntingtonny.gov.

This is our collective opportunity to preserve a treasured place in our neighborhood. Our opportunity to create a legacy in a place that provides a rich history and character to Long Island's North Shore. Our opportunity to permanently preserve the open space necessary for the health of our precious harbor. This is our opportunity!

1772 Foundation Awards Land Alliance \$35,000 Grant To Acquire DeForest Williams

Great news for the Land Alliance! The 1772 Foundation, a public charity endowed by the late Steward B. Kean whose mission is to provide financial support for targeted restoration and agricultural projects throughout the United States, has awarded \$35,000 to the Land Alliance toward the acquisition of the DeForest Williams property in Cold Spring Harbor. We are grateful that the 1772 Foundation sees fit to generously support our concerted efforts to preserve this significant location.

LAND ALLIANCE RECEIVES GIFT OF 26-ACRE FOREST AND A PRESTIGIOUS \$20,000 LTA GRANT



Closing celebration. Standing: Derek Rogers, TNC, Jane Jackson and Lisa Ott, Land Alliance; Seated: Beth Baldwin, Land Alliance, Nancy Kelley, TNC Executive Director.

Land conservation is a business of partnerships, and several of these led to the transfer of Fox Hollow Preserve from The Nature Conservancy (TNC) to North Shore Land Alliance on May 7, 2012. The two organizations, which in 2007 launched a management agreement for four TNC preserves in northeastern Nassau County, have been working together since the founding of the Land Alliance in 2003. The other three preserves in Oyster Bay Cove, Upper Brookville, and Old Brookville, will be transferred shortly.

To facilitate the transfer, the Land Alliance secured a \$20,000 conservation transaction grant from the New York State Conservation Partnership Program (CPP) to cover costs associated with acquiring these preserves. CPP grants are funded by the State's Environmental Protection Fund and administered by the Land Trust Alliance in coordination with the New York State Department of Environmental Conservation.

Land Alliance officers in 2006 signed a resolution authorizing acceptance of ownership of the preserves and a year later executed with TNC the memorandum of agreement stating that the Land Alliance would steward the preserves and invite public use consistent with TNC practices. Since that time, the Land Alliance has developed management plans for these sites, carried out stewardship and monitoring activities, recruited volunteers to help and held educational programs there. Throughout that time, TNC has provided support through continuing to carry out some maintenance activities, sharing tools and making recommendations about restoration and other projects.

“It’s been great partnering with the Land Alliance on this project. Through these preserves, the Land Alliance has raised local environmental awareness through community outreach, habitat management and stewardship. They continue to set a great example for the local community,” said TNC Preserves Manager Derek Rogers.

While these parcels have been protected since the 1960’s and 1970’s, TNC has acknowledged that the Land Alliance’s position in the community in northeastern Nassau County is vital to engaging local residents in their stewardship and increasing visitation of the preserves. Nancy Kelley, Executive Director of TNC’s Long Island chapter, remarked, “The Nature Conservancy has had an ongoing successful partnership with the North Shore Land Alliance since its inception. The transfer of these preserves within the Land Alliance’s jurisdiction enables both organizations to continue to work collaboratively, playing off of each other’s strengths and maximizing resources. This effective way of working together benefits local community members and visitors alike ~ and is a Nature Conservancy model worldwide. The Land Alliance has already demonstrated that they are excellent stewards of these parcels. We have every confidence that stewardship will continue as these parcels of open space are so important to quality of life and groundwater protection in the area.”



Joanne Tow and Christine Jackson admire a rare plant



One of many inviting paths in the Fox Hollow Preserve

The Fox Hollow Preserve is located in the Village of Laurel Hollow and contains 26 acres of mature oak woods. In 1969, The Nature Conservancy received funds from Mrs. Walter H. Page of Cold Spring Harbor that allowed for the acquisition and permanent protection of the Preserve. Unknown to most, this Preserve was once a portion of a 1,000-acre farm with milk cows, horses, chickens, ducks and geese and surrounded by forest. Today, foot trails traverse the wooded Preserve providing opportunities to view numerous species of birds and a vast array of trees.

Fox Hollow Preserve is a great place to get involved. Volunteer opportunities include trail maintenance, invasive species removal and plant and wildlife surveys. If you are interested in volunteering, please contact Jane Jackson at 516-626-0908.

The Land Alliance wishes to thank The Nature Conservancy for this lasting vote of confidence.

EXXONMOBIL COLD SPRING HARBOR RESTORATION CONTINUES



Grasses planted in Fall 2011 have begun to grow.



Exxon scientists inspecting beach conditions.



The view from the water.

For many Long Islanders, the former Cold Spring Harbor terminal is a recent memory. However, the property is currently under restoration with plans to enhance and replenish this coastal habitat and secure its future preservation.

The eight-acre Shore Road property purchased by the Standard Oil Company of New York in 1924 was operated as a petroleum fuels distribution terminal until 2003. ExxonMobil completed removal of the storage tanks and buildings from the harbor-front property in 2010, and soil remediation followed. After receiving a “no-further-action” letter from the New York State Department of Environmental Conservation in March 2011 (meaning the required remediation activities were completed to applicable state standards), ExxonMobil initiated restoration of the upland area by planting seeds of an assortment of Long Island native grasses (little bluestem, big bluestem, Indian grass and switchgrass) in May of that year. In addition, ExxonMobil plans to address specific areas of invasive common reed *Phragmites australis* in the upland portion of the property.

The Shore Road parcel is one of several properties in the U.S. that the company is considering for conservation. ExxonMobil continues to evaluate U.S. and non-U.S. surplus sites for potential conservation value and suitability for conservation. In cooperation with local conservation organizations, they continue to make progress toward land conservation of their ecologically valuable surplus site properties. We will continue to keep you posted on the progress and future activities of the Shore Road parcel.

TESTING THE WATERS

A Guide to Water Quality at Local Beaches

The Natural Resources Defense Council (NRDC) has put together a website that allows people to search beach water quality by zip code.

<http://www.nrdc.org/water/oceans/ttw/default.asp>

PRESERVATION OF 7.99 ACRES IN OYSTER BAY COVE

The North Shore Land Alliance is excited to announce that on December 28, 2011 it acquired a conservation easement over critically important land in Oyster Bay Cove. The property, owned by Charles Morgan, is 7.99 acres in total and the easement area covers the entire property. The easement, which eliminated any further subdivision of this environmentally sensitive parcel protects an area containing Northern Atlantic Coastal Plain Hardwood Forest and a broad diversity of native plants.

The parcel is located within the Tiffany Creek Preserve Protection and Enhancement Area, which is an aquifer recharge area targeted for protection by the New York State Open Space Conservation Plan as a priority conservation project. This property also lies within the Tiffany Creek Watershed Area, which is part of the Oyster Bay and Cold Spring Harbor Regionally Important Natural Area. It has also been designated by New York State as an area critically important to providing a clean watershed and in turn to protecting valuable shellfishing waters of Oyster Bay.

The North Shore Land Alliance thanks the Morgan family for their dedication to the preservation of our local natural resources.



DID YOU KNOW THERE IS AN ANNUAL STATE TAX CREDIT AVAILABLE TO EASEMENT DONORS?

New York State offers a tax credit to landowners whose land is permanently restricted by a qualified conservation easement. New York enacted the Conservation Easement Tax Credit (CETC) in 2006.

A landowner can apply for the credit annually. The credit is calculated as 25% of the school district, county and town real estate taxes paid on the restricted land, up to \$5,000 per year (does not include city or village taxes). The advantage of a credit versus a deduction is that a tax credit, unlike a tax deduction, which is an adjustment to taxable income, offsets a taxpayer's tax liability on a dollar-for-dollar basis. Another advantage of this credit is that it is a refundable income tax credit, which means that if a landowner's tax credit exceeds the amount he or she owes in state income taxes, the landowner gets a check for the difference! Landowners can claim this rebate when they file their New York State Income tax return.

The CETC applies to all qualified conservation easements, regardless of when they were created. Entitlement to the CETC runs with the land, not the landowner, so subsequent landowners can also apply for the credit provided they meet the eligibility criteria.

To find out if your conservation easement qualifies or if you have any questions regarding the Conservation Easement Tax Credit, call the North Shore Land Alliance office at 516-626-0908.

IT'S GROWING: SUMMIT



Lynette Frey, Chef Ann Cooper, Lisa Mitten, Will Allen, Lisa Ott and Ann Rathkopf at the end of the day



Registration and goody-bag distribution



Boswyck Farms staff demonstrate hydroponic growing in a soda bottle

Interest in growing and farming on Long Island is a booming enterprise as evidenced by the 800+ people who enjoyed the Small Farm Summit on Saturday, April 14 at Hofstra University. More than 30 organizations, led by the North Shore Land Alliance and including Hofstra University, Whole Foods Market and the New York State Conservation Partnership Program stepped up to sponsor the second annual Small Farm Summit. It was an extensive day of learning, hands-on instruction, entertainment and networking focused on growing more food locally for individual use, in schools, to feed people in need and to grow the local economy.

A recent Newsday article confirmed that on Long Island we do not grow enough fresh food to feed ourselves. In short, Long Island is not yet sustainable! People are hungry for both nutritious, local farm produce and new knowledge about how they can be a part of this growing movement.

Eastern Suffolk County enjoys the #1 agricultural economy in the State and the land to support it. Locally we need to grow on a smaller scale and in some instances more creatively - from small farms, to front and back yards, to community gardens to service gardens at churches - on the sides of walls and the tops of buildings!

This means "Planting Food Everywhere" as Small Farm Summit panelists Roxanne Zimmer, a Cornell Master Gardener, Brian Haweil, publisher of Edible East End, Denise Marku, Land Steward for Peconic Land Trust and Michael Veracka of Farmingdale State College explained in just one of the 45 workshops offered throughout the day.

Summit topics covered something for everyone including new developments in aquaculture, shellfish and finfish cultivation, which has been a mainstay on the north shore for centuries. For the backyard gardener there were classes offered on composting, building healthy soil, season extension methods and insects of significance to Long Island. For health and nutrition advocates topics included school gardens, edible medicinal plants and school lunch nutrition. Experiential workshops on beekeeping and chicken-rearing delighted children and their parents. Beginning farmers and experienced farmers attended panels focused on business planning, marketing agricultural products, organics and value-added operations.

Did you know there are food deserts on Long Island? Food deserts are defined as areas where fresh fruits and vegetables are not available in local grocery stores. Adelphi University, Sustainable Long Island and Island Harvest hosted provocative discussions on both food equity and food justice and local programs that are addressing this issue.

DRAWS RECORD CROWD

Throughout the day, farm and food related exhibitors like NOFA, Slow Food, local farms, service gardens and CSA's hosted demonstrations and shared information about programs and products available on Long Island. Land trusts and organizations with resources for farmers disseminated information and gathered new, interested parties for their missions. In the late afternoon, Grammy award winner Tom Chapin led a family concert that addressed food in a comical way with his music and the event closed with a celebratory wine and cheese reception.

Chris Ivers of Whole Foods Market presented a check to the North Shore Land Alliance for \$5,600 for sponsorship of the Small Farm Summit from the proceeds of 5% of the register tally from one day of business at the Jericho Whole Foods Market.

"The North Shore Land Alliance would like to thank the steering committee, co-sponsors and volunteers that made the day a rousing success," said Lisa Ott, Land Alliance President. "When this many people devote a beautiful Saturday in the spring to learn about farming, there is clearly a movement on Long Island that will only continue to grow. Growing fresh, local food is closely related to land availability and we are so pleased to be a part of something that strengthens the inextricable bond between people and land."

Other sponsors of the 2012 Small Farms Summit included High Mowing Seeds, Edible East End, the Center for Collaborative Communities, the Town of Oyster Bay, the Waldorf School of Garden City, LI Green, Cornell University Cooperative Extension of Suffolk County, iEat Green, Long Island University, Adelphi University, Farmer's Market Kennedy Plaza, Slow Food Huntington, Peconic Land Trust, NOFA-NY (Northeast Organic Farming Association of New York), Kaos Farm, Nassau Land Trust and many others who lent their expertise to creating such a worthwhile day.

The Small Farm Summit is a part of the Small Farm Initiative that began in 2010 to support sustainable efforts in local food production, farmland preservation, food waste reduction and recycling, water conservation and agricultural education.



Lorrie Huschle, A Healthy Girl, demonstrates how to make nutritious juices



The Cushman Family in the exhibition hall

CONNECTIONS

One of the greatest products of the Small Farm Summit to date has been the connections people have made and put to use. Larry Foglia and Heather Forrest have been leaders in the sustainable agricultural community for most of their lives - long before it became the movement that it is today. They, with their good friend, educator and former journalist Frances Whittelsey, founded the Long Island Community Agricultural Network (LICAN). Their fabulous work with the Gateway Garden in Huntington Station has been mentioned in our newsletters before. Today we would like to highlight their latest project, the Interfaith Community Service Garden Project.

This project came together as the result of a call to action to end childhood hunger made at the annual interfaith Martin Luther King celebration this past January. Richard Kubek, community outreach coordinator for LI Jobs with Justice, and Heather Forrest, LICAN, encouraged the congregations to dig up some lawn and grow vegetables to be donated to food banks and soup kitchens.

The need for donations is acute: in 2010, less than 10% of the food donated to Island Harvest, the largest distributor of food for the needy on Long Island, was fresh produce.

Already ten religious congregations have committed themselves to donating to food banks vegetables that they will grow this season at new gardens dedicated for that purpose, most on their own property.



Farm Summit Steering Committee Members Plan Curriculum and Organize Volunteers.



Volunteers plan curriculum for *School Gardens* and *Plant Food Everywhere* presentations.

To help insure the success of these new gardens and others yet to come, LICAN has held educational workshops for congregational garden leaders and tuition-free workshops for expert gardeners to mentor the congregations. Grants from the Long Island Community Foundation and the New York Community Trust: Horace and Amy Hagedorn Fund provide funding to pay the mentors, as well as underwriting the educational workshops and a guide that will be made available free to interested parties.

Some of the congregations that are dedicating portions of lawn and replacing them with vegetable gardens include: Dix Hills United Methodist Church, Bethany Presbyterian in Huntington, St. John's Episcopal in Cold Spring Harbor, Unitarian Universalist Congregation at Shelter Rock, Unitarian Universalist Fellowships of Huntington and Manhasset, St. Mark's and Huntington Jewish Center. Two that lack an appropriate site on their own grounds, St. Hugh's in Huntington Station and Temple Beth El in Huntington, are cultivating raised beds at the Soergel Outreach Garden in Greenlawn.

Other valuable connections incubated at the Small Farm Summit include a farming initiative for veterans and sourcing local food for area nursing homes. With the community of ambitious, bright and caring people that assembled throughout the Farm Summit planning process, more great projects are certain to follow.



FEDERAL
Expanded Tax Credit for Conservation Easements Still in Limbo

Earlier this month, the Senate's versions of the Farm Bill and the Transportation Bill each contained about \$1.4 billion for land conservation which would have been very exciting had they actually been enacted!

On June 21, 2012, the Senate passed the Agriculture Reform, Food, and Jobs Act by a vote of 64-35. The House Agricultural Committee approved its version of the Farm Bill on July 12th with reconciliation of bills to follow.

The latest extension of the federal highway and mass transit program was set to expire at midnight on June 30th. With 4th of July recess upon them, Congress raced to pass a Transportation Bill on June 29th. This bill had been years in the making and it is important to conservation because almost all of the environmental legislation passed this year was included in it!

Both good and bad provisions were included. A few conservation-related items follow:

The RESTORE Act, sponsored by Senator Mary Landreau of Louisiana was included. This provision would send 80% of civil penalties paid by corporations involved in the Gulf oil spill to the five states with Gulf coasts to help pay for environmental and economic restoration.

National Endowment for the Oceans (NEO): This provision would have directed funds from the interest collected on RESTORE funds to ocean and coastal research and monitoring. It was included in the Senate bill, and removed by the conferees.

Land and Water Conservation Fund (LWCF) language was not included. The Senate's provision to fund this important program at \$700M for each of fiscal years 2013 and 2014 is gone. Now the program will go through the regular and difficult appropriations process - the House bill provides only \$66M for LWCF, the lowest level since 1965.

The Tax Credit for Conservation Easements was, once again, left out, too.



STATE
New Funding Source for EPF

In a surprising finish to the session, legislation to enhance the Environmental Protection Fund (EPF) was passed in both houses! This legislation will dedicate a portion of the revenue from the state's existing Bottle Bill to the EPF over a number of years. Bills A. 10519 (Rules/Sweeney) / S. 7525 (Grisanti) will phase \$56 million of Bottle Bill revenue into the EPF over six years

Negotiations at the end of session included 3-way discussions among the Assembly, Senate and Governor's office on the EPF. Many thanks to the Friends of New York's Environment Coalition who did an effective job of advocating during the budget and the following weeks of session, such a good job that everyone in the Capitol was interested in doing something to benefit our cause. However, the bill that was passed in both houses was not something that was the result of a 3-way agreement, and we now must work to understand what Governor Cuomo's position will be on this bill.

The schedule for increases is \$10M in FY2013-14, \$20M in FY2014-15, \$30M in FY2015-16, \$40M in FY2016-17, \$50M in FY2017-18 and \$56M in FY2018-19 and every year thereafter.

This is a huge victory for the environment as the EPF funds everything "green" in the State of New York.



Future Conservationists



NASSAU COUNTY

Port Washington's Stannards Brook Park Re-Opening

Stannards Brook was acquired by Nassau County in 1944, originally for drainage purposes. In 2005, a group of local residents led by Land Alliance Advisory Board Member Myron Blumenfeld began planning for the transformation of this “diamond in the rough.”

Myron and friends, who later evolved into the Port Washington Parks Conservancy, arranged for engineering studies, engaged landscape architects and organized the grants necessary to start the ball rolling. In fact, they worked for more than five years with Nassau County, neighbors and friends to plan this \$1 million dollar rehabilitation and restoration project. And we are glad they did!

On Saturday, May 21st under sparkling blue skies, mild temperature and a light breeze Stannards Brook Park was officially reopened. The community came out to celebrate, along with town, county and state officials,

who credited the work of volunteers and cooperation of many layers of government for the park's makeover. Together, visitors enjoyed the newly constructed bridges, native plantings, recently added benches and grassy fields. Naturalists were on hand for guided tours and the children took part in a treasure hunt.

This renovation was made possible through partial funding from both the 2004 and 2006 Nassau County Environmental Bond Programs.



Holly Byrne, Port Washington Parks Conservancy Executive Secretary, and Myron Blumenfeld, Parks Conservancy Chairman



The transformation from drainage ditch to meandering stream



Early residents of Stannards Brook Park



Town of Oyster Bay

Blueway Trail Coming to Oyster Bay/Cold Spring Harbor



The Town of Oyster Bay received \$76,000 in planning funds to establish a trail for paddlers and boaters to explore the north shore of the Town of Oyster Bay. Funding was provided from a matching grant from the New York State Environmental Protection Fund's Local Waterfront Revitalization Program.

On March 27th, the Town, working in conjunction with Friends of the Bay and the Oyster Bay/Cold Spring Harbor and Hempstead Harbor Protection Committees, hosted an open house so an eager audience could review maps of access points and facilities and make suggestions on ways to improve the trail.

Nelson, Pope & Voorhis was hired to conduct a study of suitable potential stopping sites and nearby amenities and survey local residents to learn what they would find useful in a blueway trail and map. The trail will allow people in non-motorized vessels to explore the north shore in a new way, knowing that restaurants, hiking trails and other amenities are just a stone's throw from access points. Stay tuned for a date of the launch of the completed map.

The Town of North Hempstead is developing a separate trail that will link to Oyster Bay's from Hempstead Harbor.

The Farm At Oyster Bay is Getting In Shape

The Town of Oyster Bay is making tremendous progress at what was previously referred to as Hillside Farm owned by the Littauer Family. This 26-acre treasure located in Oyster Bay Cove has undergone major tree work, facilities improvements and a remarkable restoration of its gardens. The official opening is planned for summer 2013!





TOWN OF NORTH HEMPSTEAD

Roslyn Country Club to Be Restored and Opened to Public

On June 21st, the North Hempstead Town Board approved the acquisition of a 7.385-acre portion of the Roslyn Country Club to create a new town park and open space.

The Town will spend \$2 million through its Environmental Legacy Fund, which preserves open space, to purchase the property and issue \$7.5 million in bonds to renovate the facility. The property also includes a pool and tennis courts.

While the details of the agreement are being finalized, it has been agreed that membership at the new park would be open to all town residents. A family membership fee is estimated to be approximately \$1,000 per year.

In the late 1940s, when Levitt & Sons, the builders of Levittown, started a more upscale subdivision of 668 homes in Roslyn Heights known as the Roslyn Country Club, it sweetened the appeal of a house or lot purchase with the promise of a neighborhood country club exclusively for residents' use, setting dues at \$100 a year. The 10.5-acre Gold Coast pool and tennis club was the social center of the community, a place children could walk to. But six years ago, saddled with numerous lawsuits, its owner shut down the pool and the courts, much to the chagrin of residents.

"The town, watching this from outside in," said Town Supervisor Jon Kaiman, "saw this wonderful piece of property that might be lost forever, so we acted."



Things your family can do to protect our water supply

Action	Amount Saved
Fix a leaky faucet.	3 gallons per day (But first count the number of drops per minute that leak!)
Install a bottle filled with water in your toilet tank so that amount of water will be displaced each time you flush the toilet. (Or use a low flow toilet that uses 1.5 gallons of water per flush.)	5+ gallons per day
Install a barrel at the base of roof gutters to collect rainwater for plants and gardens (and reduce runoff into storm drains).	Depends on Avg. Rainfall
Turn off the faucet when you are brushing your teeth.	2 gallons per minute
Reduce your shower time by 2 minutes.	10 gallons
Refrigerate tap water to drink instead of running tap until water cool	200 gallons per month
Use extra tap or cooking water to water plants instead of running fresh water.	200 gallons per month



Town of Huntington

Gateway Garden Grows in Size and Community Partnerships

We reported last year on the successful public/private partnership between the Town of Huntington and the Long Island Community Agricultural Network (LICAN). Together, the Town and LICAN took a deserted parking lot on Rt. 110 and turned it into a community resource complete with an army of volunteers, educational programming, narrative murals and a farmstand! The progress from year to year has been remarkable and final construction of Gateway Garden will be completed in 2012 with about 25 more adult planting beds, a nature explore play area and a social gathering area.

Thanks to this fruitful partnership, children who attend the Tri Community & Youth Agency (TriCYA) Center in Huntington Station have a new green opportunity this summer.

LICAN, in collaboration with TriCYA, are offering an eight-week eco-literacy and gardening program to children that enables them to grow food for their families at the Gateway Park Community Garden. Twice a week sessions, led by a certified K-6 teacher who co-founded an edible garden at her school, also exposes the children to healthy food choices, reveal where food comes from and explain how earth, sun and water are at the foundation of life. Working in garden beds at

Gateway, which is a short walk from the indoor TriCYA center, the children will plant, nurture and harvest pesticide-free vegetables.

The tuition-free program is being funded by a grant from the New York Community Trust: Horace & Amy Hagedorn Fund. Fifteen children from grades 3 to 6 will participate. In addition, the funding will support part-time jobs for two teenage interns to assist the teacher, Robin Obey, a resident of Huntington. Obey teaches kindergarten at the Park Avenue School in North Merrick.

“This pilot project, LICAN’s second children’s gardening program at Gateway Garden, brings the benefits of the community garden to a larger segment of the community and is an example of the educational and economic potential of the garden,” said Frances Whittelsey, executive director of LICAN. Gateway, which is managed by LICAN under license from the Town of Huntington, has 63 beds used by adults to grow food for themselves and their families and 24 children’s beds.

LICAN is a project of the Open Space Institute, Inc. Citizen Action Program. Congratulations to all on setting such a great example!



The Gateway Green Team in action preparing the raised beds for the square foot gardening method

AUTHOR ALEX PRUD'HOMME SPEAKS TO LAND ALLIANCE MEMBERS



Liz McLanahan, Author Alex Prud'homme, Lisa Ott, Augusta Donohue and Mary Beth Donohue

On January 25th, journalist Alex Prud'homme spoke to members and friends of the North Country Garden Club and North Shore Land Alliance about his latest book, [The Ripple Effect. The Fate of Freshwater in the Twenty-First Century.](#)

Prud'homme began his presentation with a series of thought-provoking questions. Will there be enough drinkable water to satisfy future demand? What is the state of our water infrastructure—both the pipes that bring us fresh water and the levees that keep it out? How secure is our water supply from natural disasters and terrorist attacks? Can we create new sources for our water supply through scientific innovation? Is water a right like air or a commodity like oil? Will the wars of the twenty-first century be fought over water?

The answers to these questions were not so easy. As the climate warms and world population grows, demand for water has surged, but supplies of fresh water are static or dropping, and new threats to water quality appear every day.

Prud'homme pointed out that only when a catastrophe hits do people start to think about their water. From the impacts of this summer's storms, it's easy to see that our world is increasingly subject to weather and its effects, something that Prud'homme calls global weirding: like flooding in the plains, drought in the south and west.

Given the dramatic unpredictability of water, we need to prepare for the unthinkable. US cities like Seattle, Atlanta and New York are woefully unprepared for the extremes of water lows and highs: drought, severe storms and/or sea level rise. Shoring up sea walls that would protect NYC in a large hurricane like Irene would cost \$9 billion, however potential damages to NYC could reach a \$1.9 trillion dollar level.

He took the issue from a macro government level to the impacts occurring here on Long Island. Local communities nationwide have had to take the responsibility of lobbying for better screening of drinking water. Even though it seems natural that governments would respond to protecting drinking water, the costs are staggering.

USGS models predict that Nassau County will be the hardest hit county in the state from the impacts of rising seas. Additionally, on Long Island, the quality and quantity of our drinking water is particularly relevant because we get our drinking water from one source: underground aquifers. Our aquifers replenish themselves from snow and rainfall. The permeability of the land above the aquifers will impact how easily rainwater travels to complete its cycle. As sea level rises salt water further intrudes into the aquifer polluting our drinking water source.

Maintaining open space as recharge areas for drinking water as well as stormwater absorption for bays and ponds is critical to protecting both our ground and surface water resources.

On nearly every continent, groundwater in aquifers is being drained faster than the natural rate of recharge

— National Geographic, April 2010



THE FUTURE OF NATURE

On April 25th, the North Shore Land Alliance hosted an event in Manhattan featuring renowned environmentalist and author, Bill McKibben. Mr. McKibben has written several books on the environment including *Earth, Making a Life on a Tough New Planet* and *The End of Nature*. He has been called by Time magazine “the planet’s best green journalist”.

Bill McKibben founded 350.org, an organization to draw immediate attention to the threat of climate change as the by-product of the industrial revolution and fossil fuel consumption. The name, 350.org, refers to the goal of restoring the earth to carbon emissions of no more than 350 parts per million (ppm). With a group of university friends, they ran a campaign in 2007 called Step It Up that organized over 2,000 rallies at iconic places in all 50 of the United States. These creative actions - from skiers descending a melting glacier to divers hosting an underwater event - helped convince many political leaders to adopt a common call to action: cutting carbon emissions 80% by 2050.

Mr. McKibben spoke to an audience of over 100 people about the current measured level of carbon which is 393 ppm. If sustained this level will raise global temperatures and contribute to rising sea level, devastating droughts, the inability for large and traditionally productive countries like Russia to grow enough food to feed itself and possibly even more seismic activity. For the past 10,000 years of human activity, the period of time called the Holocene, the atmosphere had remained stable at 275 ppm.

With the current rate of energy consumption, the carbon dioxide emitted into our atmosphere could result in a catastrophic 3-4 degree centigrade rise in global temperatures over time. The only solution is to immediately stop consuming fossil fuels and make the transition to energy efficient appliances and sun and wind power. This will not be fast or easy but cannot be avoided.

The Land Alliance is most grateful to Mr. McKibben for taking time out of his busy schedule to educate and inspire us.



IT'S MILE-A-MINUTE SEASON!

With temperatures rising the dreaded mile-a-minute vine is making an even bigger mark on Long Island than ever before. Known for its rapid growth (up to six inches in a day, or up to 25 feet in a season!), this invasive pest, if left to its own devices, can take over a field or woodland, outcompeting desirable native vegetation. We have scheduled a series of events for volunteers to pull mile-a-minute at a preserve in Old Brookville or Upper Brookville this year.

Please join North Shore Land Alliance at one or both of the following events!:

Thursday, July 19 @ 9:30 a.m.
Tuesday, July 24 @ 6:30 p.m.

Additional times may be arranged for groups and individuals. This is a wonderful opportunity for those looking to fulfill community service requirements!

Supplies and snacks will be provided. To register and for directions please contact the Land Alliance at 516-626-0908 or jjackson@northshorelandalliance.org. Thank you!

This project is partially funded by the New York State Department of Environmental Conservation through the Environmental Protection Fund and REI.

EARTH DAY ACTIVITY AT ROOSEVELT PRESERVE



Students and teachers from the Roosevelt Middle School and Roosevelt Children's Academy who assisted with planting and clean-up

For five years, the Land Alliance has been collaborating with the students, teachers, residents and community leaders of Roosevelt to help protect our planet and local natural areas for future generations. On May 17th, after much rescheduling due to rain and school tests, the Land Alliance met with two groups of students from schools within the district for our annual spring event at the 73-acre Nassau County-owned Roosevelt Preserve.

With sunny skies (finally!) and warm temperatures, more than 50 middle school students and their teachers from the Roosevelt Middle School Green Team and Green Partners and the Roosevelt Children's Academy planted hundreds of herbs, dusty miller, pansies and marigolds at the Preserve's Elizabeth Street / Prospect Avenue entrance. Neighbors, who had been watching as beds were prepared for planting, were thrilled to have such a lovely display across the street!

Afterwards, Land Alliance Associate Director of Stewardship Jane Jackson and Roosevelt Middle School Educator Leslie Pieters led the groups on a short nature walk through the Preserve to explore the winding Meadow Brook, observe trees and spring flowers and help remove

invasive vegetation such as garlic mustard, Oriental bitter-sweet and English ivy. This was a particularly joyous walk because in previous years, this same Meadow Brook was littered with thousands of water bottles and other debris delivered through storm drains.

Thanks to the County and a grant from the New York State Office of Parks, Recreation and Historic Preservation, debris within the brook has been removed, an accessible path has been created and lined with benches and the main entrance at Frederick Avenue has been improved, making it more visible and inviting. Soon, visitors can expect to have a place to sit and relax after taking a tour of the Preserve.

These activities have led to more residents' visiting and taking an interest in maintaining the Roosevelt Preserve just as we had hoped when we began these efforts in 2007.

Many thanks to our generous donors: Hicks Nurseries, Westbury, Martin Viette Nurseries, East Norwich and Youth Services of America for their generous contributions to this wonderful day.

MEADOW RESTORATION MOVES FORWARD WITH A LOT OF HELP FROM OUR FRIENDS!

Restoring a meadow takes place one step at a time, as is the case with the 42-acre Hope Goddard Iselin Preserve in Upper Brookville. One big step took place this winter when Davey Trees generously offered to donate a three-person crew for a day. They cleared fallen and invasive trees, stumps and dense vines from the site, advancing meadow restoration and furthering efforts to enhance valuable wildlife habitat.

Two years ago the Land Alliance organized a visit to Iselin Preserve by an expert crew of birders, natural resource managers and Upper Brookville officials. Resulting recommendations led to a proposal of initial steps for restoring a field at this much-loved local preserve. Since then, the site has undergone annual mowing and tree work in or near winter. During spring and summer growing seasons, Land Alliance and Nature Conservancy (TNC) staff and volunteers have worked to remove invasive vegetation that wasted no time in blanketing sections of the field and its periphery.

In 2010 Randall Brothers donated tree removal and chipping services just before snow covered the field (for months!). Additional volunteers from Huntington-Oyster Bay and North Shore Audubon Societies carried out breeding bird surveys and Christmas Bird Counts there, and a number of Land Alliance Walks in the Woods have been held at the Preserve.

The Land Alliance and TNC have also been collaborating in meadow restoration at James Preserve in Old Brookville. This spring and summer we are partnering with the outdoor store REI and the State Department of Environmental Conservation to round up volunteers to pull the dreaded mile-a-minute vine, which has invaded both preserves. Contact us at 516-626-0908 if you'd like to help!

"We're happy to be able to make a direct contribution so that Iselin's field can provide great wildlife habitat as well as a place for people to explore a part of Long Island natural history," said Davey Trees' District Manager Bill Aitken. Woody Tree Service of Glen Cove has, in addition, chipped woody invasive plants at James Preserve at no charge.

Lisa Ott, Land Alliance President, explained, "Restoring these fields with involvement from local residents, businesses and volunteers is a wonderful example of how our entire community, coming together to steward our open spaces, can conserve a rural landscape – one that benefits native plants and wildlife while protecting our water supply and treasured access to beautiful natural areas for our children and grandchildren."

We would also like to thank mowers Andrew Gladysz, Walter Hegarty and friends of Kaos Farm and James' neighbors Douglas Chan and Elsie and Bernie Shulman.

These actions, along with ongoing monitoring of plants and animals that occupy the sites, will continue to inform future actions, such as possible planting of Long Island native grasses and other plants that will result in healthier habitat and a more beautiful community.

May this be the beginning of many such efforts where non-profits and community members work together to protect and preserve our vital natural areas.



Rudy of Davey Trees assist with stump grinding at Iselin Preserve

2012 OPEN SPACE SOCIETY DINNER



Patricia Paladines, Carl Safina and Luis Rinaldini,
Land Alliance Vice-Chair



Carter Bales, Land Alliance Chair,
and Hostess Megan deRoulet



Lee Edwards, Michael Crane and Elizabeth Paul

Saturday, June 2nd was a very special night for Land Alliance Open Space Society members. Megan and Dan deRoulet, most generously and graciously, welcomed more than 80 guests into their spectacular Laurel Hollow home.

The evening began with drinks on the lawn before dining under the stars in a tent built over their pool. This extra special location for the dinner tent provided guests with the ability to enjoy breathtaking views from the party's beginning until its end.

The theme of this year's dinner was "Water" and those expansive and extraordinary views of nearby Cold Spring Harbor reinforced how important this precious resource is to our everyday quality of life.

Our host, Dan deRoulet, welcomed guests and shared stories of his lifelong connection to conservation from growing up in the woods of western Nassau County to raising his own family on this very special spot.

Land Alliance Board Chair Carter Bales gave a brief organizational update which included information about the campaign to protect the 31-acre DeForest Williams Property and the restoration of the ExxonMobil site, both located directly across the Harbor.

Dinner was followed by a special presentation from Dr. Carl Safina, prominent ecologist and marine conservationist. Dr. Safina is also president of the Blue Ocean Institute, which he founded in 2003. His organization is dedicated to inspiring among humans a closer relationship to the sea and helping more people realize its power and beauty.

Dr. Safina, who joined us from the set of a 12-part PBS series he is currently filming on the oceans, talked about access and how important it is for people to experience nature. He is the author of six books and delighted guests by reading excerpts from his most recent work, *The View from Lazy Point; A Natural Year in an Unnatural World*.

We are most grateful to our supporters who joined us for the evening and to the deRoulets for their extraordinary hospitality and commitment to local conservation.





INTERNATIONALLY ACCLAIMED ARTIST BARBARA ERNST PREY MAKES EXTRAORDINARY GIFT TO LAND ALLIANCE

The North Shore Land Alliance is deeply grateful to Barbara Ernst Prey, a Long Island native and an esteemed figure in the art world, who has offered the Land Alliance a private viewing of her new paintings and prints at her studio and home Saturday, July 14th from 9:00 am. - 5:00 pm. A portion of the proceeds will be donated to the Land Alliance. She has also offered to donate the full proceeds from the sale of 20 of her extraordinary prints to benefit local land conservation efforts.

Prey has painted powerful vibrant views of our landscape for over 40 years. In these deeply personal works she explores the delicacy, complexity and interconnectedness which reflect her concern for the natural world. Open areas have visibly played a central role in her paintings; her new body of work is about celebrating and preserving our environment.

Barbara was appointed by President George Bush to serve on the National Council on the Arts, the 14 member advisory board of the National Endowment for the Arts. Members are elected for their established record of distinguished service or achievement in the arts.

She was also invited by President George Bush's family to paint the official White House Christmas card. As an artistic Ambassador, her artwork is displayed in more than 100 embassies and consulates worldwide through the U.S.

Art in Embassies program. As a NASA artist she is among an elite group of American artists who have documented space history. She was recently featured on the CBS Evening News and CBS Sunday Morning for her NASA artwork currently in a Smithsonian traveling exhibit.

Prey is the recipient of many honors and awards, including the New York State Senate Women of Distinction Award. Her paintings are in numerous prominent collections worldwide including the White House, the Brooklyn Museum, the Smithsonian National Museum of American Art, President and Mrs. George W. Bush, Harvard Business School, Williams College Museum of Art, the Kennedy Space Center and Tom Hanks. The New York Times writes, "Prey is going where icons Rauschenberg and Warhol have gone before." A graduate of Williams College with a master's degree from Harvard, she was awarded a Fulbright Scholarship and a grant from the Henry Luce Foundation for her work. For many years Barbara was a whipper's-in for Buckram Beagles on Long Island and has witnessed the development of places that provided painting inspiration.

To learn more about Barbara's work: Barbara Prey Studio • 22 Pearl Street • Oyster Bay • 11771 or - email: studio@barbaraprey.com • website: www.barbaraprey.com.

To order these beautiful prints, please contact the Land Alliance directly.



After The Rain (21H" x 28W")



Old School (14H" x 19W")

BOY SCOUTS STRIKE AT FOX HOLLOW PRESERVE



The perfect opportunity to start removing invasive English ivy from Fox Hollow Preserve presented itself in summer 2011 when the Land Alliance was approached by Boy Scout Troop 201's Justin Rockitter of Wantagh. Justin was looking to meet requirements to earn a William T. Hornaday silver medal (named after the director of the New York Zoological

Park and founder of the National Zoo who was a leader in saving the American bison from extinction), issued to Scouts who complete four significant projects in natural resource conservation or environmental improvement. One of these turned out to be an undertaking that will benefit Fox Hollow Preserve.

After considerable advance planning that included measuring an area to be cleared of English ivy and fundraising to purchase native Virginia creeper to plant in its place (which led to, in this case, a donation of plants from the Greenbelt Native Plant Center, a facility of New York City Department of Parks & Recreation on Staten Island), Justin and several of his troopmates arrived at Fox Hollow on Saturday, March 10. Under Justin's mature leadership, the scouts pulled English ivy from an area approximately 40,600 square feet, and then planted half of it with native Virginia creeper, which already occurs in the Preserve and is fairly aggressive, so we thought it might actually give the English ivy a run for its money and be a strong competitor. By leaving half the cleared area unplanted, we can monitor any differences between the two halves. So far, the results are promising: while the Virginia creeper is thriving, a diversity of native plants is covering the entire site, with no English ivy (and very few other invasives) coming in. We are gradually moving forward on removing additional English ivy from the area adjacent to Justin's study site.

"I really enjoyed working with the Land Alliance and my fellow scouts to make the Preserve a better place," mused Justin. Many thanks to Justin for launching a great project. He clearly learned a lot over the course of it and Fox Hollow Preserve is benefitting greatly.

LAND ALLIANCE YOUNG MEMBERS GROUP TAKES SHAPE



Young members helped with repairs at the Trousell House in Oyster Bay

This past winter, Land Alliance Trustees Julie and Luis Rinaldini and Botsy and Hoyle Jones hosted a group of 10 young conservationists to discuss the formation of a North Shore Land Alliance young member's group. The group, led by event organizers DR Holmes, Max Stenbeck and Tim DiPietro discussed ways the "next generation" could contribute to conservation efforts in the community they have known and loved since their childhoods.

This core group of attendees, including David Knott, Justine Pilkington Keithline, Tim & Remsen Dooley, Abby Weir, Malcom Dorson and Charlotte Schmidlapp, explored strategies for bringing their generation together around a local conservation effort.

Activities will be kicked off on Saturday, September 8th at the Harriman Cup Polo match between UVA and Yale to be held at the Meadowbrook Polo Fields. The next organizing event of this "yet to be named" group is planned for late October in New York City.

If you, a child or grandchild would be interested in joining this group of caring young people, please contact the Land Alliance and we will gladly add you/them to the list.

CELEBRATING THE HARVEST MOON WINE AUCTION KICK-OFF PARTY



Meredyth Smith, Helen Bonebrake, Beth Wagner



Committee members enjoy kick-off festivities



Augusta and Mark Donohue

Our 9th Annual Wine Auction and Dinner will be held at Youngs Farm in Old Brookville on Saturday, September 29th. We are most honored that Helen Bonebrake, Anne Goodwin, Meredyth Smith and Beth Tunney Wagner have agreed to serve as Co-Chairs for this important evening.

We will this year be Celebrating the Harvest Moon which, traditionally, is the peak of harvest. The crest of the full Harvest Moon will happen at 10:19 p.m. that evening. How special and appropriate that we would be invited to gather at Nassau County's largest protected farm to celebrate food, wine and local conservation!

The festivities were "Kicked Off" at Meredyth and Brooks Smith's beautiful Lattingtown home on Saturday, June 23rd. Nearly 80 prospective committee members joined in sharing ideas about ways to make the 2012 Wine Auction and Dinner the Land Alliance's most successful event ever.

Our quartet of Committee Chairs asked committee members to help in the following ways:

- 1) Attend the party and invite their friends.
- 2) Donate wine to the Live or Silent Auction and ask their friends to do the same.
- 3) Encourage sponsorships, sell raffle tickets and/or journal ads.

Raffle ticket sales began that evening for the "Instant Wine Cellar"- 100 bottles of premium wine rated 88+ by Robert Parker. Raffle tickets are \$100 each and will be sold until the evening of September 29th when the lucky winner will be drawn at the Wine Auction Dinner.

This is our most significant event of the year. Please consider joining our committee, purchasing a raffle ticket, becoming a sponsor or attending. For more information, please call the Land Alliance at 516-626-0908.



DONATE WINE TO SUPPORT LOCAL CONSERVATION EFFORTS

Donations of wine to be sold at 2012 Wine Auction and Dinner would be greatly appreciated. Donations are fully tax deductible and proceeds will be used to advance local land conservation.

To donate please contact Carol Schmidlapp at 516-626-0908 or email at cschmidlapp@northshorelandalliance.org.

“FORE THE LOVE OF THE LAND” ANNUAL GOLF OUTING



It was June 18th, the day after the U.S. Open and there were plenty of inspired golfers playing at the Land Alliance’s fourth annual golf tournament at the Piping Rock Club. The event was sold out thanks to the stellar work of our fabulous golf committee chaired by Frank Segarra and Hoyle Jones.

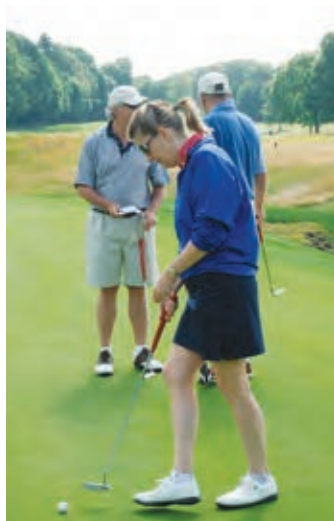
The day began with a continental breakfast and time to practice on the driving range. It was “best ball” format with a shotgun start at 9:00 a.m.

This year the prize for the hole-in-one was \$10,000. There was a google map at the hole with a vector drawing for golfers to see where they should land the ball. We almost had a winner with a ball coming within inches of the cup. There was also a 60’ putting contest and the winner of that, Steve Orent, also came within inches of the target!

The winners of low net, with a score of 55, were Jeff DiDomenico, Joseph Marino, Steve Orent and Victor Trizzino. The winners of the low gross, for the second year in a row, with a score of 65, were Matt Bruderman, John Colgate III, Duke Barnett and Alex MacCormick. Winner of the longest drive was Rick Schmidt for the men and Becky Creavin for the women. Closest to the pin was won by Scott Benjamin.

We are most thankful to our sponsors and contributors and to all who participated in making this year’s outing such a success!

Golf Outing participants enjoy a perfect weather day



NORTH SHORE LAND ALLIANCE

WOULD LIKE TO THANK THE FOLLOWING
FOR THEIR GENEROUS SUPPORT TO THE GOLF OUTING:

SPONSORS

IKE MOLLY & STEVEN FOUNDATION

ADVANTAGE TITLE	KATHY AND MITCHELL JACOBSON
THE BAHNIK FOUNDATION	BOTSY AND HOYLE JONES
DR. AND MRS. MICHAEL BIANCO	WILLIAM & JOYCE O'NEIL CHARITABLE TRUST
CATHY CHERNOFF	HOLLIS RUSSELL
CHICAGO TITLE INSURANCE COMPANY	LISA AND RALPH PASCUCCI
SIMON AND EVE COLIN FOUNDATION	M. SCHAMROTH AND SONS
THE GARDEN CITY HOTEL	FRANK SEGARRA
MR. AND MRS. CHRISTOPHER HALPIN	STEWART TITLE INSURANCE COMPANY
HIGHWOOD CAPITAL	MRS. DAVID S. TAYLOR



Private Wealth Management

Deutsche Bank



STERLING
food • events • experience



D G M
Asset Management, L.L.C.



CONTRIBUTORS

HELEN BILL CASEY	MARQUIS WINES & SPIRITS
DUSTIN CHASE	NESPRESSO
MR. AND MRS. ELLIOT CONWAY	DAVID PEARSON
CURDS AND WHEY	STEPHEN ORENT
MARY AND JOHN LORUSSO	RUSSELL SELOVER
HUGH O'KANE ELECTRIC COMPANY	WHOLE FOODS

LAND ALLIANCE ELECTS NEW TRUSTEES



George Eberle

George is a Partner and Managing Director at Park Hill Group, a leading global alternative asset placement agent, which is an affiliate of The Blackstone Group. He is a senior member of Park Hill's private equity and hedge fund distribution team located in New York.

Mr. Eberle has more than 20 years of sales experience in equity sales and trading and alternative investment areas. Prior to joining Park Hill, Mr. Eberle was a Director at Credit Suisse First Boston, heading Institutional Sales and Trading for the West Coast. Previously he was with SG Cowen, and spent ten years with Merrill Lynch and Co. Mr. Eberle received a BS in Business Administration from Villanova University.

George and his wife, Aimee, served ably as our 2011 Wine Auction Chairs. They hosted the kick-off party, encouraged their friends to attend and came up with the brilliant idea for the Robert Parker rated 90+ Wall of Wine that raised thousands of dollars for the event. After the wine auction, George volunteered with a friend to remove large trees from one of our preserve that had blown down during Tropical Storm Irene.

George and Aimee live in Muttontown with their four children. In addition to being a newly elected Trustee of the North Shore Land Alliance, he is also a Member of the Board of Trustees of the Green Vale School, Wings Over Wall Street, a Wall Street organization dedicated to furthering the research for ALS and Family House, a charity dedicated to providing free housing for families whose children are receiving cancer and other life-threatening disease treatments at UCSF Medical Center in San Francisco.

George has also volunteered to gather premium wines for the *Instant Wine Cellar* at the 2012 Wine Auction Dinner.



Augusta Reese Donohue

Augusta ("Gussie") grew up in Cold Spring Harbor, NY where she attended East Woods School. She later went on to the Madeira School and Trinity College. In 1994 she moved to New York City where she worked in television advertising for the next 10 years for USA Networks and

Lifetime Television. In 2001 Augusta and her husband, Mark Donohue, moved back to Long Island and currently reside in Cold Spring Harbor. They have three children, Johnny, Franny and Ava.

Augusta's passion for conservation started with her grandmother, Frances Reese, who was a founding member of Scenic Hudson. Her grandmother taught her not only the value of land preservation but also that individuals can make a difference in conservation. Augusta has been on the board of the TR Bird Sanctuary and the Oyster Bay Community Foundation. She is currently co-chair of the North Country Garden Club Conservation Committee and Vice President of the Lloyd Harbor Parent Association.

INSTANT WINE CELLAR

RAFFLE

Purchase tickets to win
100 Bottles of Premium Wine
rated 88+ by Robert Parker

\$100 per chance

Winning ticket to be drawn at
2012 Wine Auction and Dinner
Saturday, September 29th
at Youngs Farm, Old Brookville

To purchase tickets please contact Andrea
Millwood at 516-626-0908 or
andrea@northshorelandalliance.org

THE FUTURE OF DRINKING WATER ON LONG ISLAND

Sarah Meyland is director of the Center for Water Resources Management at New York Institute of Technology and a Land Alliance advisory board member.

In Oyster Bay earlier this year to talk about his 2011 book, "The Ripple Effect," Alex Prud'homme described how water will become the "defining resource of the 21st century."

Water use, he says in the book, sets off a "widening ripple effect that has consequences very few people understand," and he warns that we no longer have the luxury of "ignoring our impact on water supplies." This year, we may see firsthand how fragile our supply is. Rainfall is 62 percent below normal. The soil is very dry, and having a raging forest fire in April is extraordinary. The luxury of ignoring water may not be an option this year.

Long Island experiences the three major water issues that Prud'homme identifies in his book: pollution, overuse and waste. Suffolk suffers from increased water pollution in part because of inadequate wastewater collection. Water pollution seeps ever deeper beneath Nassau as groundwater over-pumping continues. In both counties, excessive summer use results in extravagant waste. The hot, sunny weather of 2010 produced the largest pumpage of water from Long Island's aquifers in history. Last year was unusually wet, yet some water utilities pumped record amounts in July. Automatic lawn watering systems are the leading contributor to the 300 to 400 percent increase in summer use. Population growth and building practices also play a role in climbing demand. The ripple effect of wide water usage on quality and supplies is here, yet we have no water management agency to help us with it.

It takes time to adapt and implement reasonable water management ~ which is why we should act now. A coalition of environmental, civic, academic, good government and water professionals has met for the past five years to research how Long Island can secure effective, professional water management. Our proposal: to establish the same approach to water management that 70 percent of the rest of New York already enjoys. Professional managers would oversee the quality and quantity of the water in our aquifers, to ensure that our supply is sustainably used and protected far into the future.

Beyond Long Island, New York State relies primarily on surface water ~ using the 76,000 lakes, rivers and reservoirs on the other side of Long Island Sound. Three river-basin management agencies, known as "compacts," manage those major supplies. They are an excellent model for Long Island. Instead of organizing an agency based on river basins, however, we would organize ours according to where our water is stored: the aquifers beneath Nassau and Suffolk.

An aquifer management agency would protect and maintain the groundwater, our one source of drinking water. The agency's staff, with public input, would develop short- and long-term management plans, study groundwater supply, develop a comprehensive bicounty regional and sub-regional computer model to analyze parts of Long Island at risk from saltwater intrusion or pollution, and evaluate ways to improve aquifer protection. It would also define the sustainable amount of water that can be used without depleting streams or causing saltwater intrusion. The cost for these services would be about equal to the price of one cup of premium coffee per person per year, based on annual pumpage, and could be added as a usage fee on water bills.

The last major saltwater intrusion studies were conducted 20 years ago. In March 2011, Nassau County budget problems led to the termination of monitoring by the U.S. Geological Survey. While budget problems are real, failing to monitor water conditions is the ultimate penny-wise-and-pound-foolish approach, especially now that we're facing a drought. A Long Island aquifer management agency would help solve problems affecting both counties, including sewage treatment, water waste, stormwater management and groundwater cleanup. It would take on the important task of disseminating information. Few people are aware that New York City is proposing to buy extra water from Nassau County utilities for times when it closes leaking upstate water tunnels for repairs. This is just one example of why Long Island needs a prepared, informed and professional agency to represent our interests.

Alex Prud'homme closes his book predicting that because most communities have not yet run out of water, they will continue to take it for granted through waste, contamination and mismanagement. Let's make Long Island an exception.

WITH MUCH GRATITUDE THE LAND ALLIANCE PRESENTS THE NAMES OF
INDIVIDUALS, FAMILIES, FOUNDATIONS, BUSINESSES AND ORGANIZATIONS
WHO SUPPORTED THE NORTH SHORE LAND ALLIANCE
PROGRAMS AND OPERATIONS IN 2011.



\$10,000 to \$50,000

Anonymous *
Mr. and Mrs. Lee Ainslie, III
Mr. and Mrs. Carter F. Bales
Mr. and Mrs. Matthew J. Bruderman/
Bruderman Brothers
Ms. Sally Peters and Mr. Murat H. Davidson, Jr.
Mr. and Mrs. Thomas Dooley, Sr.
Mr. and Mrs. Kostas Douzinas
Ike Molly & Steven Elias Foundation
Gerry Charitable Trust
Mr. and Mrs. Hoyle C. Jones
Land Trust Alliance/NYS Conservation
Partnership Program
Mr. and Mrs. Patrick Mackay
Mrs. Barry Osborn
Mr. and Mrs. Luis Rinaldini*
Mr. and Mrs. David H. Taylor, Jr.
Mr. and Mrs. Bradford G. Weekes, III
William and Joyce O'Neil Preservation Fund

\$5,000 to \$9,999

Dr. and Mrs. Michael M. Bianco
Mr. and Mrs. W. Russell G. Byers, Jr.
Mrs. Cathy Chernoff
Mr. and Mrs. Daniel C. de Roulet/
Windham House, Inc.
Mr. and Mrs. Robert MacDonald/
Cranshaw Corporation
Mr. and Mrs. Steve Denning
Mr. and Mrs. George Eberle
Mr. and Mrs. E. Maxwell Geddes, Jr.
Mr. and Mrs. Robert A. Geddes
Mr. and Mrs. Edwin Goodman
Humes & Wagner, LLP
Mr. and Mrs. Ragnar M. Knutsen
Mr. and Mrs. Stephen Lessing
Mr. and Mrs. John Macaskill
Mr. and Mrs. Thomas J. McGrath
Mr. Robert G. Merrill
Mr. and Mrs. Clarence Michalis
Mr. and Mrs. Charles F. Morgan
Mr. and Mrs. Paul Napoli

\$5,000 to \$999 (cont.)

Mr. and Mrs. Nicholas Paumgarten
Mr. and Mrs. Robert Pitts, Jr.
Mr. and Mrs. Theodore Smith, III
Mr. and Mrs. Matt Stadler
Mr. and Mrs. Jeffrey F. Welles
Whole Foods Market-Jericho Location

\$2,500 to \$4,999

Albanese Organization
Mr. David F. Andersen
Mr. and Mrs. Roger Bahnik/
The Bahnik Foundation
Mr. and Mrs. Peter Bartley
Ms. Rosemary Bourne
Mr. and Mrs. Peter Cannell
Mr. and Mrs. Stephen E. Canter
Mrs. Daniel P. Davison
Mr. and Mrs. Guy De Chazal
Deutsche Bank
Dr. Lee MacCormick Edwards and
Mr. Michael Crane
Mr. Richard Entel
Exxon Mobile Bio Medical Sciences, Inc.
Mr. Peter Fazio/Sterling Affair
Mr. and Mrs. Michael Golden
Mr. and Mrs. Alex Koundourakis
Mr. and Mrs. Thomas Lister
Mr. and Mrs. Charles McCurdy
Mr. and Mrs. Jonathan Moore
Mr. and Mrs. Kenney Oh
Mr. Robert J. Osterhus
Mr. and Mrs. Douglas Paul
Dr. and Mrs. John E. Postley
Mr. and Mrs. Thomas W. Purcell, Jr.
Mr. and Mrs. Matthew Schamroth/
M. Schamroth & Sons
Mr. and Mrs. Frank Segarra
Mr. Herbert L. Smith III
Mr. Andreas M. Stenbeck
Stewart Title Insurance Company
Mrs. David S. Taylor

\$1,000 to \$2,499

Mr. and Mrs. John D'Addario, Jr
Mr. and Mrs. Salvatore J. Alesia
Mr. and Mrs. Rodney B. Berens
Bessemer Group, Inc.
Mr. and Mrs. Peter S. Bliven
Mr. and Mrs. Dixon Boardman

Mrs. Edward Bonnie
Mr. and Mrs. William S. Brenizer
Mr. and Mrs. Michael Brennan
Mr. and Mrs. Sterling B. Brinkley, Jr.
Mr. and Mrs. Timothy S. Broadbent
Mrs. Thomas H. Choate
Ms. Constance Cincotta
Mr. and Mrs. Alexander P. Coleman
Mr. and Mrs. C. Payson Coleman
Mr. and Mrs. John Collett
Community Counseling Service Co., LLC
Mr. James Connors
Mrs. Joseph B. Conolly, Jr.
Dr. and Mrs. Stephen Cuchel
Mr. and Mrs. Bradley W. Cuddeback
Mr. and Mrs. Roderick H. Cushman
Mrs. George W. Cutting, Jr.
Mr. and Mrs. Norris Darrell, Jr.
Mr. Robert De Rothschild
DGM Asset Management/Mr. Anthony
Apostolico
Mr. and Mrs. Thomas L. Di Galoma
Mr. and Mrs. Joseph T. Donohue, Jr.
Mr. and Mrs. Mark Donohue
Mr. and Mrs. Nelson Doubleday
Mr. and Mrs. Johnston L. Evans
Farrell Fritz, P.C.
Mr. and Mrs. John A. Forlines, III
Franchina & Giordano, P.C.
Mr. and Mrs. David Fuchs
Mr. and Mrs. Charles Garnett
George V. Bullen and Son, Inc.
Gibson, Dunn & Crutcher, LLP
Mr. and Mrs. Thomas Gimbel
Mr. and Mrs. Donald J. Gogel
Gondelman Foundation

Mr. and Mrs. Oliver R. Grace, Jr.
Mr. and Mrs. John R. Grace
Mrs. Jane S. Greenleaf
Mr. Douglas Hammond
Mr. Walter H. Haydock
Mr. and Mrs. Landon Hilliard, III
Mr. and Mrs. Thomas Hogan, Jr.
Mrs. Bruce Hooton
Mr. and Mrs. Philip Howard
HSBC Bank USA
Mr. Waldo Hutchins, III
Mr. and Mrs. Fredd H. Isaksen
JP Morgan
Mr. and Mrs. Richard L. Kauffman
Mr. Kim Elliman
Mr. and Mrs. Kenneth Langone
Laurie Landeau Foundation, LLC
Mr. and Mrs. Bryan Hunt Lawrence
Mrs. John H. Leib
Mr. and Mrs. Thomas K. Lieber
Mrs. Dana Linden
Mr. and Mrs. Richard A. Loughlin
Ms. Adrianna Ma
Mr. and Mrs. Christopher Mailman
Mrs. William L. Matheson
Mr. and Mrs. Michael McDermott
Mr. and Mrs. Eduardo Mestre
Mr. and Mrs. Clarence Michalis
Mr. and Mrs. Garfield L. Miller, III
Mr. Edward C. Mohlenhoff
Mr. and Mrs. George Braniff Moore
Moore Charitable Foundation, Inc.
Mr. and Mrs. Francis Murray, III
Ms. Caroline Niemczyk
Mr. and Mrs. Hugh O'Kane



Mr. and Mrs. Hugh O’Kane, Jr.
 Mr. and Mrs. John O’Kane
 Mr. and Mrs. George D. O’Neill
 Mr. and Mrs. Gilbert Ott, Jr.
 Mr. and Mrs. Gunnar S. Overstrom
 Mr. and Mrs. William Parsons, Jr.
 Mr. David P. Pearson
 Mr. and Mrs. Gregg Haggerty/
 Stanley Supply & Tool Co.
 Mrs. Peter Henderson
 Mr. and Mrs. Howard Phipps, Jr.
 Mr. and Mrs. Robert Pilkington
 Mr. and Mrs. John R. Reese
 Mr. and Mrs. Joseph Rosenthal
 Dr. and Mrs. Joseph A. Rudick
 Mr. and Mrs. Wright Rumbough
 The Honorable Bernard Ryba
 Mr. and Mrs. Joseph Sambuco
 Mr. and Mrs. Peter Schiff
 Mr. and Mrs. Jason Scott
 Smiros & Smiros Architects, LLP
 Mr. and Mrs. Herbert Smith, IV
 Mr. and Mrs. Theodore B. Smith, Jr.
 Mr. and Mrs. Eugene P. Souther
 Mr. and Mrs. William G. Spears, Jr.
 Mr. and Mrs. John Specce
 Cashin, Spinelli & Ferretti, LLC
 Mr. and Mrs. Bernard Spitzer
 Society for the Preservation
 of Long Island Antiquities
 Mr. and Mrs. Jeffrey Thielen
 Mr. Thomas A. Saunders III
 Mr. and Mrs. Thomas A. Saunders IV
 Ms. Nancy Tilghman
 Tocqueville Asset Management
 Treiber Family Foundation
 Mr. and Mrs. Stanley Trotman, Jr.
 Mr. Tom Walsh/
 Colonial Wire & Cable, Inc.
 Mrs. Rosalind Walter
 Mr. and Mrs. Douglas A. Warner, III
 Dr. and Mrs. James Watson, Jr.
 Mr. and Mrs. Richard Weir, III
 Wellington Foundation, Inc.
 Mr. and Mrs. Karl Wellner
 Mr. and Mrs. John E. Welsh, III
 Mr. and Mrs. John A. Werwaiss
 Mrs. Robert Winthrop



\$500 to \$999

Mr. and Mrs. Richard Amper
 Astoria Federal Savings
 Bank of America/
 Private Wealth Management
 Mr. and Mrs. William L. Banks
 Dr. and Mrs. Henry H. Bard, Jr.
 Mr. and Mrs. Terrill E. Barnard
 Mr. and Mrs. Joseph F. Barry, III
 Mr. and Mrs. Doug Bateson
 Mr. and Mrs. A. William Bertsch, III
 Mr. and Mrs. George H. Bostwick, Jr.
 Mr. and Mrs. Douglas Braff
 Ms. Anne Busquet
 Mr. and Mrs. Daniel R. Bystrom
 Ms. Louise Parent and Mr. John Casaly
 Mrs. Helen Bill Casey
 Mr. and Mrs. Michael Chait
 Mr. and Mrs. Gilbert W. Chapman, III
 Mr. and Mrs. Edwin Cohen
 Mr. and Mrs. Elliot S. Conway
 Mr. and Mrs. Frederick Creavin
 Mrs. Robert Cuddeback
 Daniel Gale and Sotheby’s Realty
 Mr. and Mrs. Henry P. Davison, II
 Mr. and Mrs. Nelson DeMille
 Mr. and Mrs. Jeffrey Didomenico

Mr. and Mrs. Tim Dooley, Jr.
 Mr. and Mrs. P. Benjamin Duke
 Mr. and Mrs. Robert Fagiola
 Mr. Joel M. Fairman
 Mr. Herbert S. Fitzgibbon, II
 Dr. and Mrs. Lawrence H. Durban
 Mr. and Mrs. John E. Eckelberry





\$500 to \$999 (cont.)

Friedman, LLP
Mr. Mark Gennaro
Mr. and Mrs. Joseph Gleberman
Mr. and Mrs. Lawrence R. Glenn
Mr. Tom Golon/
 Wonderland Tree Care, Inc.
Dr. and Mrs. Charles Goodwin
Mr. William Gooth
Green Vale School
Mr. and Mrs. Leland M. Hairr
Mr. and Mrs. John B. Harlow, II
Henry Luce Foundation, Inc.
Mr. H. Dieter Holterbosch
Mr. and Mrs. James B. Hoover
Mr. and Mrs. Ian M. Huschle
Mr. and Mrs. John Iacone
Mr. and Mrs. Mitchell Jacobson
Mr. and Mrs. John Jansing
Mr. and Mrs. Robert Jensen
Mr. and Mrs. Stuart Johnson, III
Mr. and Mrs. Jeffrey E. Kelter
Mr. and Mrs. Michael C. Kempner
Mr. and Mrs. David Knott
Mr. and Mrs. Martin Wenz*/
 The Krusos Foundation
Mr. and Mrs. James M. Large, Jr.
Mr. and Mrs. Robert D. Lindsay
Mr. and Mrs. Vincent Mai
Dr. Joseph Marino
Martin Viette Nurseries
Mr. and Mrs. Glenn R. Minkin
Ms. Patricia C. Montgomerie
Mrs. Ann L. Nolte
Mr. and Mrs. Jacques Nordeman
North Country Garden Club of LI
Mr. and Mrs. Frank Olt, Jr.
Mr. Stephen Orent
Mr. and Mrs. Peter J. Pell, Jr.
Mr. and Mrs. Howard Phipps, III
Mr. and Mrs. Thomas L. Pulling
Mr. and Mrs. Peter Quick
Rivkin Radler
Mr. and Mrs. Ron Romeo
Mr. Hollis Russell
Mr. and Mrs. Ernest Scalamandre
Mr. F. William Schmergel
Mr. and Mrs. Russell Selover

Mrs. William Simpson/
 William and Hope Simpson Foundation
Mr. and Mrs. Eliot L. Spitzer
Mrs. Robert Staniford, Jr.
Mr. and Mrs. James Stebbins
Mr. and Mrs. Brian G. Sweeney
Mr. and Mrs. Hugh Tanchuck/
 North Shore Architectural Stone, Inc.
Mr. and Mrs. Roderick Thaler
Mr. and Mrs. Austen T. Gray
Mr. John C. Thomas, Jr.
Mr. H. Peter Van Ingen, Jr.
Mr. and Mrs. Paul Vermlyen
Mrs. Helene P. Victor
Mrs. Marjorie M. Von Stade
Ms. Joann B. Walker
Ms. Sandra Webel
William and Joyce O'Neil Charitable Trust
Mrs. Virginia Newman and Mr. Sam Yocum
Mr. and Mrs. Mark Zambratto/
 The Pink Link

Up to \$499

Accents et Details, Ltd
Mr. and Mrs. Richard Acerra
Ms. Gail Allan
Mrs. Doris T. Ackerman
Mr. and Mrs. Yoshiaki Amakawa
Mr. Dennis Amato
Mr. and Mrs. John B. Anthony, Sr.
Mrs. S. Reed Anthony
Mr. and Mrs. James F. Armstrong
Mr. and Mrs. James Armstrong
Mr. Thomas Armstrong, III
Mr. and Mrs. Dwight Arnesen
Mr. Nathan Assor
Mr. and Mrs. Richard Aurelio
Mr. and Mrs. Warren Dillaway Ayres, Jr.
Mrs. Nancy Azzaro
Ms. Joanna Badami
Mr. and Mrs. Lawrence Baldwin
Mr. and Mrs. Benjamin Balkind
Mr. Townsend Bancroft
Mr. and Mrs. Thomas M. Bancroft, Jr.
Bank of America Charitable Foundation
Mr. and Mrs. Daniel P. Barbiero
Mr. and Mrs. Duke Barnett
Mr. and Mrs. Anthony B. Barton



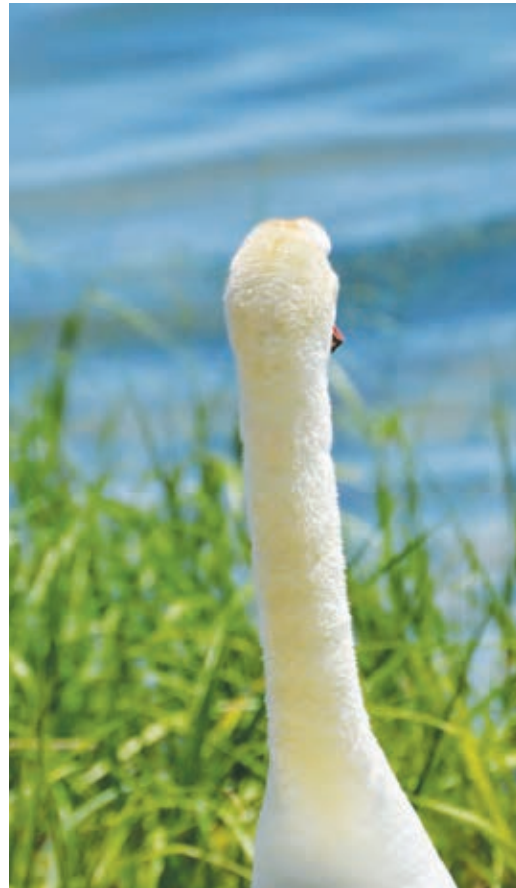
Up to \$499 (cont.)

Mr. and Mrs. Alvin Batista
 Mr. and Mrs. Michael Baudo
 Mr. and Mrs. N. Ridgely Beale
 Mrs. Brian Behrens
 Mr. John P. Bellamente
 Mr. and Mrs. Frank Benedetto
 Mr. and Mrs. David L. Berg
 Mr. Neil Bergin
 Mr. and Mrs. Richard J. Berlinghof
 Mr. and Mrs. Robert Bernhard
 Mrs. Mary Lenore Blair
 Mr. Simon Bland
 Mr. and Mrs. Richard Blank
 Mr. and Mrs. Arthur Bloch
 Mr. and Mrs. Philip Blocklyn
 Mr. Myron Blumenfeld
 Mr. and Mrs. Michael H. Bonebrake
 Mr. and Mrs. Jay Bosworth
 Mr. John Bourne
 Mr. and Mrs. Philip Brandes
 Mr. Peter Brechter
 Mr. and Mrs. Russell Brooks
 Mr. and Mrs. Lawrence Brown
 Mr. and Mrs. Peter Brown
 Mr. Michael Bruderman
 Mr. Gillis Poll/
 Bryant and Cooper Steakhouse
 Mr. and Mrs. William W. Burchfield
 Ms. Julia Burns
 Mr. and Mrs. Joseph Burns
 Mrs. Mary Callanan

Mr. and Mrs. William L. Cappadona
 Ms. Claire A. Cardone
 Mr. Kevin Carey
 Ms. Mary Ellen Casey
 Mrs. Jean Cattier
 Mr. and Mrs. Gilbert W. Chapman, Jr.
 Mr. and Mrs. Dustin Chase
 Mr. and Mrs. Alexander Chernoff
 Chernoff Diamond and Co.
 Mr. and Mrs. Gene Chuba
 Mr. and Mrs. Robert B. Ciullo
 Mr. and Mrs. David C. Clark
 Mr. and Mrs. E. McMichael Clark, Jr.
 Dr. and Mrs. Bayard Clarkson
 Mr. and Mrs. Donald K. Clifford, Jr.
 Mr. and Mrs. John Codey
 Ms. Lisa Colgate
 Mr. and Mrs. Peter B. Colgrove
 Mr. and Mrs. Cornelius E. Colley
 Mr. Michael Comeford
 Concerned Citizens Plainview-Old Bethpage
 Mrs. Leonard J. Connolly
 Mrs. Robert F. Copp
 Mr. Kenneth D. Cron
 Ms. Helen Crosson
 Mr. and Mrs. Robert Czerniecki
 Dr. E. William Davis, Jr.
 Mr. Daniel P. Davison, Jr.
 Mr. and Mrs. George P. Davison
 Mrs. W. Tucker Dean
 Dr. and Mrs. Leland Deane
 Mr. and Mrs. Robert Deans, Jr.

Mr. and Mrs. Claudio Del Vecchio
 Mr. Rick Deuel
 Mrs. Nancy Dematteis
 Mr. and Mrs. David H. Deming
 Mrs. Mimi Desena
 Mr. and Mrs. Mitchel Diamond
 Mr. Danny DiLeo
 Mrs. Suzanne Dillenbeck
 Mr. and Mrs. Peter R. Dirkes
 Mr. Robert Donohue
 Mr. and Mrs. Christopher G. Doran
 Ms. Amanda Downing
 Mr. Ted Dreyfus
 Ms. Eugene Du Bois
 Mr. and Mrs. James Duffy
 Mr. and Mrs. Anthony D. Duke, Jr.
 Mr. and Mrs. Oakley Duryea
 Mr. and Mrs. James Eckel
 Ms. Edith Edson
 Mr. and Mrs. Bradley D. Egna
 Mrs. Duncan Elder
 Ms. Ellen Roche
 Mr. and Mrs. Stephen Ely
 Ms. Esther B. Ernst
 Mr. and Mrs. William Evans
 Mr. and Mrs. Robert Feldman
 Mr. and Mrs. Lawrence H. Feldman
 Mr. and Mrs. Andrew Fentress
 Dr. Robert Ferber
 Ms. Pamela Ferguson
 Mr. and Mrs. Peter L. Fetterolf

Mr. and Mrs. Christopher Flatters
 Mr. and Mrs. William Fleig
 Mr. Michael Cucci/
 Foresight Services Center, Ltd.
 Ms. Martha Frana
 Ms. Barbara Freeman
 Mrs. Lynette Frey
 Friends of John Venditto
 Mr. and Mrs. Mario Gallo
 Mr. and Mrs. Randi Garibaldi
 Ms. Christina Goetjen
 Ms. Elaine R. Goldman
 Mr. and Mrs. Peter Goldmark
 Dr. and Mrs. Kenneth Goodman
 Mr. and Mrs. Joseph Grace
 Mr. and Mrs. Steven Grapstein
 Mr. and Mrs. Austen Grey, Jr.
 Mr. and Mrs. Joseph Greco
 Mr. and Mrs. Robert Greenberg
 Mr. and Mrs. Marc W. Greene
 Mr. and Mrs. Stanley Greenman
 Dr. and Mrs. Donald S. Gromisch
 Mr. Joseph Grupp
 Mr. and Mrs. Raymond Guckenberger
 Dr. and Mrs. Peter Guida
 Mr. Christopher Hagedorn
 Mr. Brian Hampton
 Mr. and Mrs. John Blake Hanson
 Mr. and Mrs. Gordon Hargraves
 Mr. and Mrs. David F. Harrington
 Mrs. Constance Haydock
 Mr. and Mrs. Herman M. Heinemann
 Mr. Huyler C. Held
 Mrs. Peter Henderson
 Mr. and Mrs. Robert V. Henning, Jr.
 Mr. Jim Henry
 Mrs. Seymour Hittner
 Mr. and Mrs. Jeffrey L. Hollman
 Mr. and Mrs. Mark Hopkinson
 Mr. and Mrs. John Hornbostel
 Mr. and Mrs. Robert C. Hughes
 Ms. Deana Huminski
 Ms. Sally Hunter
 Mrs. George Hussey, Jr.
 Mrs. Judith Budner/
 Images & Details, Ltd.
 Mr. and Mrs. Enrico Indelicato
 Mrs. John Ingleby



Ms. Jane Jackson
 Mr. Dan Jacobs
 Mr. Pat Janco
 Mrs. Robert D. Jay
 Mrs. John P. Jennings
 Mr. and Mrs. Hugh M. Jones
 Mr. Carl Knight/
 K II Designs
 Mr. and Mrs. Gary P. Kaplan
 Mr. and Mrs. Kevin Kelley
 Dr. Spencer Kellogg, II
 Mr. and Mrs. Clarke Keough
 Ms. Kathleen Kiaer
 Mr. and Mrs. Adam O. Kimmick
 Ms. Marissa Kines
 Mr. and Mrs. Stuart Kirkpatrick
 Dr. and Mrs. Alan M. Kisner
 Mr. and Mrs. Martin Klein
 Dr. and Mrs. Jonathan E. Koltitz
 Mr. and Mrs. Phedon Kontulis
 Mr. Richard G. Kopsco
 Mr. and Mrs. Bruce A. Korson
 Mr. and Mrs. Edward Kramer
 Mr. and Mrs. Todd Kraska
 Mr. and Mrs. Daniel A. Kriesberg
 Mr. Erik Kulleseid
 Mr. and Mrs. Mort Kunstler
 Mr. and Mrs. Barry Lamb
 Mr. and Mrs. Edward M. Lamont
 Ms. Laurie Landeau
 Mrs. John W. Lapsley
 Mr. and Mrs. Richard Laskey
 Mr. and Mrs. Timothy M. Lee
 Mr. Ron Lehman
 Mr. Robert Lemle
 Mrs. Susan Lenoir
 Mr. and Mrs. Frances Leone
 Mr. and Mrs. Peter Levantino
 Mr. and Mrs. Arthur S. Levine
 Mr. Turk Lewis
 Mr. and Mrs. Thomas A. Lewis, Jr.
 Ms. Helen Lind
 Mr. and Mrs. George N. Lindsay, Jr.
 Mr. and Mrs. James W. Litke
 Mr. and Mrs. Joseph LoCicero
 Mr. and Mrs. Carl Lombardi
 Mr. and Mrs. Timothy Lyons
 Mr. and Mrs. Alexander MacCormick

Mr. and Mrs. Richard MacDougall
Mr. and Mrs. Malcolm MacKay
Mr. and Mrs. Robert B. Mackay
Mr. Donald Mackenzie
Ms. Suzanne S. Macklin
Mr. Andrew Maier
Mr. Vladimir F. Marcel
Ms. Diane Matarese
Matinecock Garden Club
Matinecock Partners
Mr. and Mrs. Bradford J. Matthews
Mr. Russell Matthews
Mr. and Mrs. Douglas May
Mr. and Mrs. Brian McCarthy
Ms. Karin McCartney
Ms. Suzanne S. McFarlane
Mr. John M. McFaul, Jr.
Mr. Thomas McGrail
Mr. and Mrs. Brian E. McGunigle
Mr. Robert M. McLane
Ms. Linda McLaughlin
Mr. David McMaster
Mr. and Mrs. Thomas J. Meager
Mr. and Mrs. Charles Mederrick
Mr. Gianni Mercuri
Mr. and Mrs. Robert A. Merrill
Mr. and Mrs. Lawrence Merson
Mr. and Mrs. Charles R. Meyer
Mr. and Mrs. Edward Meyer, III
Dr. and Mrs. Lewis Milhim
Mr. Allen G. Miller
Mr. and Mrs. Stephen S. Mills
Mrs. Andrea Millwood
Ms. Lisa Mitten
Mr. and Mrs. Keith M. Moffat
Dr. Marilyn Moffat Salant
Mr. and Mrs. James D. Mooney, Jr.
Mr. Grail Moore
Mr. and Mrs. Paul Morris
Mr. and Mrs. Richard Mortimer
Mr. and Mrs. Donald Morton
Mrs. Roberta P. Murray
Mr. and Mrs. George Myles
Nancy Martin Graham Trust
Ms. Natalie Naylor
Ms. Christina M. Nelson
Mr. Douglas Nemeth
Norman Gold Trust

Mr. Gary Melius/
Oheka Castle Hotel and Estate
Mr. and Mrs. Kyle Olesen
Mr. Peter O'Neill
Mr. Stephen Orent
Mr. Tom Palumbo
Ms. Judy Paris
Mr. and Mrs. Ralph Pascucci
Mr. and Mrs. Joseph Pellizzi
Mr. and Mrs. John M. Perkins
Mr. and Mrs. Franklin Perrell
Ms. Andrea Pezza
Ms. Jane Pflug
Mrs. Shanna Philippe
Mr. and Mrs. R. Stuyvesant Pierrepont
Ms. Leslie Pieters
Mr. and Mrs. James Pirtle
Mrs. Whitney Posillico
Mr. Thomas Powell
Mr. David and Ms. Brie Cordel Powers
Mrs. Augustin Jay Powers
Mrs. Richardson Pratt, Jr.
Mr. and Mrs. Clayton Prugh
Mrs. Richard I. Purnell
Ms. Kathryn C. Randolph
Mrs. Christopher Randolph
Mr. Brian Rathjen
Mr. and Mrs. Cornelius J. Reid, Jr.
Mr. and Mrs. Glenn Reilly
Mr. Joseph Reily
Mr. and Mrs. Martin J. Remsen
Mr. and Mrs. Matthew Ricciardi
Mr. William Richards
Dr. and Mrs. Bernard Richards

Mr. Michael Richter
Ms. Carol Ann Riechers
Mr. and Mrs. Donald Riefler
Indian River Community Found.
Mr. W. Wynn Riley
Mr. and Mrs. Raymond Rivardo
Dr. and Mrs. James Robins
Ms. Elizabeth E. Roosevelt
Mr. and Mrs. Robert J. Rose
Roslyn High School Environmental Club
Mr. and Mrs. Thomas Ross
Mrs. Walter L. Ross, II
Ms. Diana Russell
Mr. and Mrs. Joseph B. Ryan
Mr. and Mrs. Nicholas Sabbatini
Mr. and Mrs. Steven E. Sacks
Mrs. Harold P. Salembier
Ms. Patricia P. Sands
Mr. Bernard Sagento
Ms. Vicki Santello
Santemma & Deutsch LLP
Mr. Kevin Scalia
Mrs. Gregor Scheu
Mr. Randolph Schlener
Mr. and Mrs. Lawrence Schmidlapp
Mr. and Mrs. Frederick Schoenhut
Dr. and Mrs. Robert Schreiber
Mr. and Mrs. John E. Schwartzberg
Mr. and Mrs. David Scialabba
Mr. Esteban Scott
Mr. and Mrs. Raymond Searby
Mr. and Mrs. Alan Seligson
Mr. and Mrs. Enrique Senior
Mr. and Mrs. David Shalam



Up to \$499 (cont.)

Mr. and Mrs. John Shalam
Mrs. Nancy Sage Shea
Mrs. Edward M. Shepard
Mr. and Mrs. Angelo Silveri
Mr. and Mrs. Anthony Simoneschi
Ms. John Skvarla
Mrs. Alexander B. Slater
Mr. and Mrs. Jim Smiros
Mr. and Mrs. David Smith
Ms. Katharina Smith
Mr. and Mrs. Alexander Smith
Mr. and Mrs. John C. Smith
Mrs. Peter O. A. Solbert
Mr. and Mrs. Michael Spielman
Mr. Barrie Curtis Spies
Mr. and Mrs. Michael Stiegelbauer
Mrs. Richard Storrs
Mrs. William J. Strawbridge
Mrs. John Sulzer

Mrs. Donald Sutherland
Mr. and Mrs. Michael Swirnoff
Syosset Garden Club
Ms. Barbara Szydowski
Mr. Peter J. Talty
Mr. and Mrs. John W. Taylor
Mr. and Mrs. Walter Teagle, III
Mr. and Mrs. Donald Textor
Mr. and Mrs. Richard B. Thatcher Sr.
Mr. and Mrs. Clarkson Thornburgh
Three Harbors Garden Club
Mr. and Mrs. William Titus
Mr. and Mrs. Jack Townsend
Mr. and Mrs. David B. Townsend
Anonymous
Mr. and Mrs. Joseph Tymeck
Mr. Richard Ulman Sr.
Mr. Richard Ulman, Jr.
Ms. Martha Ulman
Mrs. Irma Uribe
Mr. Donar Van Den Berg

Mr. and Mrs. Halsted S. Vander Poel
Mr. and Mrs. Robert Von Stade
Mr. Seth H. Watkins
Mr. Alan N. Weeden
Mrs. Bradford G. Weekes, Jr.
Mr. and Mrs. Robert Weissman
Mr. and Mrs. Greg Wetanson
Mr. and Mrs. Fifield Whitman
Mr. Scott Willard
Mr. Kurt Wilner
Mr. and Mrs. Fred Wilpon
Mr. and Mrs. Harrison Wilson
Mr. Ira Wilson
Mrs. Eunice Johnson Winslow
Mr. and Mrs. Frederick C. Witsell, Jr.
WM.E. Martin & Sons Co., Inc.
Mr. and Mrs. Mitchel Wolfe
Mr. and Mrs. John Wylie

*Includes gifts in-kind

Thanks to the following businesses who contributed to the Land Alliance
through their Matching Gift Programs:

The Achelis Foundation & The Bodman Foundation
Bank of America
Federated Department Stores
Henry Luce Foundation





NORTH SHORE LAND ALLIANCE INC.

151 Post Road
Old Westbury, NY 11568
(516) 626-0908
www.northshorelandalliance.org
info@northshorelandalliance.org

Non Profit
Org. U.S. Postage
PAID
Westbury, NY 11590
Permit No. 59



The North Shore Land Alliance continues to strive to learn more about how we can make a difference and to implement eco-friendly practices. The paper we use in our newsletter is recycled. Once you have finished reading our newsletter, please recycle by passing it along to a friend.

9TH ANNUAL WINE AUCTION & DINNER



SATURDAY,
SEPTEMBER 29, 2012
YOUNGS FARM
HEGEMAN'S LANE
OLD BROOKVILLE

Mission Statement

The North Shore Land Alliance is a land trust formed to protect and preserve, in perpetuity, the green spaces, farmlands, wetlands, groundwater and historical sites of Long Island's north shore for the enjoyment and benefit of future generations and the protection and enhancement of quality of life.



WALKS IN THE WOODS



🌿 Thursday, July 26, 6:00 p.m.,
Clark Botanic Garden, Albertson

Assistant horticulturist Nancy Warny will lead a composting demonstration at this 12-acre jewel tucked away behind the Long Island Railroad. Learn about the Town of North Hempstead's innovative program to encourage residents to convert would-be food waste to "black gold," then take a tour of the Garden.

🌿 Saturday, September 8, 10:00 a.m.,
Coffin Woods, Locust Valley

Explore the plants and wildlife of North Shore Wildlife Sanctuary's Coffin Woods with naturalists and Long Island Botanical Society of officers Barbara Conolly and Carol Johnston and learn all about the Siberian geranium.

🌿 Saturday, September 15, 8:30 a.m., between
Robert Moses State Park and Fire Island Lighthouse, Fire Island
Queens County Bird Club Vice President Mary Normandia helps to coordinate the Fire Island Hawk Watch every fall and has invited us to help her count hawks! She will also lead a short bird walk at the Lighthouse.

🌿 Sunday, October 7 (tentative), 2:00 p.m.,
Norman J. Levy Park & Preserve, Merrick

Experience the wonder of early autumn foliage and fall migrating birds with naturalist Peter Martin at this magnificent 52-acre former landfill! Bring the kids.

🌿 Sunday, October 28, 10:00 a.m.,
East Meadow Farm/CCE Horticultural Center, East Meadow

Visit the new home of Cornell Cooperative Extension - Nassau County. Julie Seghrouchni, CCE - Nassau's Horticulture/Community Forestry Educator, will teach us about the best trees to plant on Long Island and provide a tour of the demonstration garden.

🌿 Saturday, December 1, 10:00 a.m.,
Eagle Dock Foundation, Cold Spring Harbor

The Foundation's Don Niddrie and naturalist John Taylor will lead us into the world of ospreys and winter waterfowl. We will learn about activity that's been happening on this beach property since an osprey nesting platform was installed and take a look at the birds that have arrived offshore for the winter season.

Space is limited; registration is recommended. To register and for directions please contact North Shore Land Alliance at (516) 626-0908 or andrea@northshorelandalliance.org.